

Temora Hospital Redevelopment Landscape REF Report

Health Infrastructure



Determined Approval

REF Approval No: 08/2025

Date: 26/06/2025



SITE IMAGE
Landscape Architects



Contents

Introduction	3
The Site	4
Landscape Masterplan	5
Drop Off and Entry Path	6
Rehabilitation Courtyard	7
Open Space	8
Staff Courtyard	9
Northern Courtyard	11
IPU Courtyard	11
Birthing Courtyard	12
Connecting with Country	13
Planting Strategy	14
Plant Schedule	15
Materials Strategy	16
Existing Trees	17
Canopy Cover	18
Greener Places Response	19



Introduction

This REF report has been prepared to document the proposed landscape design associated with the Temora Hospital Redevelopment.

This report is intended to be read in conjunction with supporting consultants reports including but not limited to architectural, civil and arboricultural reports.

The landscape scope of the project includes peripheral landscape areas surrounding the proposed building, carparking and hardstand areas.



S I T E I M A G E
Landscape Architects



The Site

The site serves as the current Temora Hospital with an adjacent aged care facility.
A key landscape feature of the site is the existing tree plantings with a series of landscaped garden around the existing hospital building.
The site slopes up from the main vehicular entry located on Loftus Street.



SITE IMAGE
Landscape Architects



Landscape Masterplan



Dropoff & Entry Path

The drop off area serves as the key community facing entry. A pathway provides circulation from dropoff and parking to the main entry. Seating within the drop off shelter allows for rest and waiting. A green space adjacent can be accessed from the drop off as well as viewed from adjacent IPU rooms and main waiting area



Sculptural seating



Paving referencing natural forms



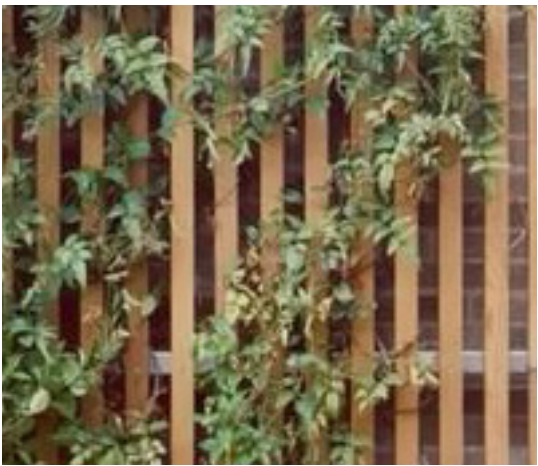
Screening planting to IPU rooms



Feature tree to entry drive

Rehabilitation Garden

The rehabilitation garden provides a facility for physical rehabilitation. Accessed through the gymnasium in the ambulatory care unit the courtyard includes features such as a ramp and stairs, a sensory pathway, feature pots and seating to rest.



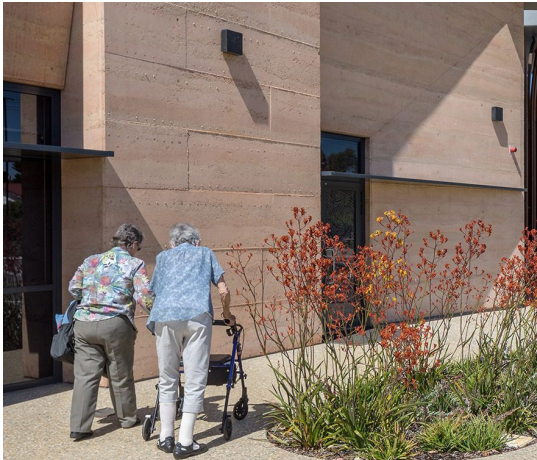
Vetical timber or composite slat fence with Climbers to fencing



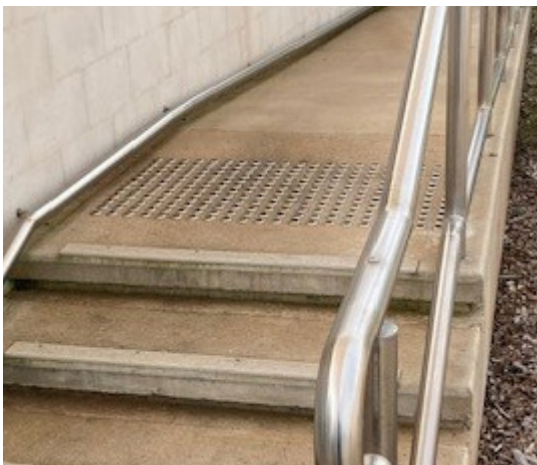
Bench seating



Sensory pathway / surfaces



Circulation path



Steps and ramp for therapy

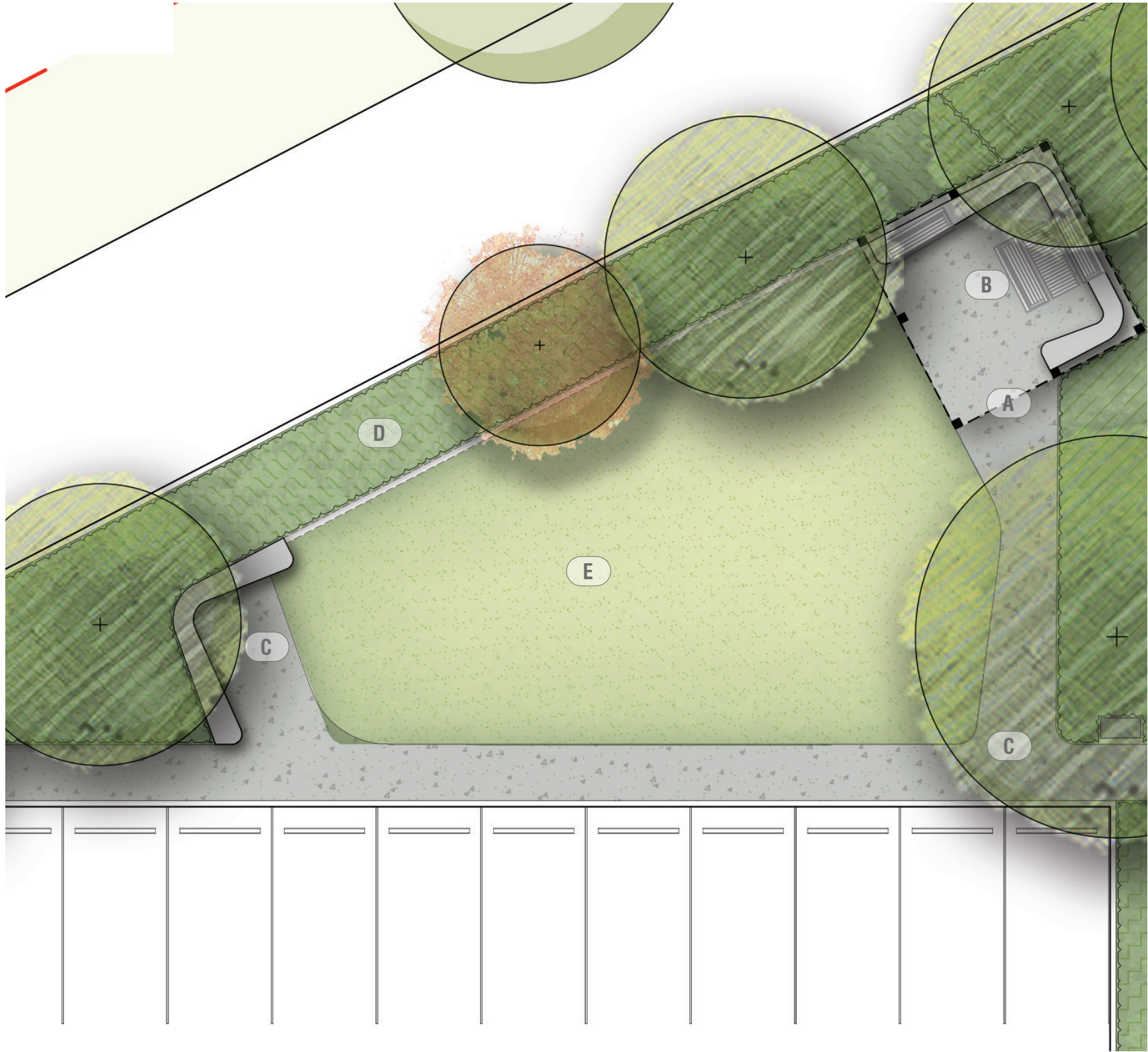


- A** Perimeter fence set within softscape
- B** Seating wall
- C** Sensory pathway
- D** Screening perimeter planting

Open Space

The open space provides an area to the periphery of the main hospital building.
An existing shelter from the Hosptial grounds is to be relocated to provide a sheltered seating area.
Planting along the driveway provides visual screening and seperation of users.

- A Relocated LAHC shelter
- B Picnic seating
- C Circulation path
- D Screening planting to driveway
- E Lawn



LAHC shelter to be relocated



Seating



Circulation path



Lawn with path to edge

Staff Courtyard

The staff courtyard utilises the existing semi circular facade of the hospital building to serve as a screen and shelter. A variety of seating within the space serves staff breaking out from the adjacent staffroom. A larger lawn area provides a space for respite. Buffer planting provides screening and a green outlook to the adjacent workroom.

- A Courtyard enclosed by heritage facade
- B Feature tree with seating edge
- C Dining furniture
- D Open lawn
- E Seating



Lawn area with seating



Feature deciduous tree



Bench and dining furniture

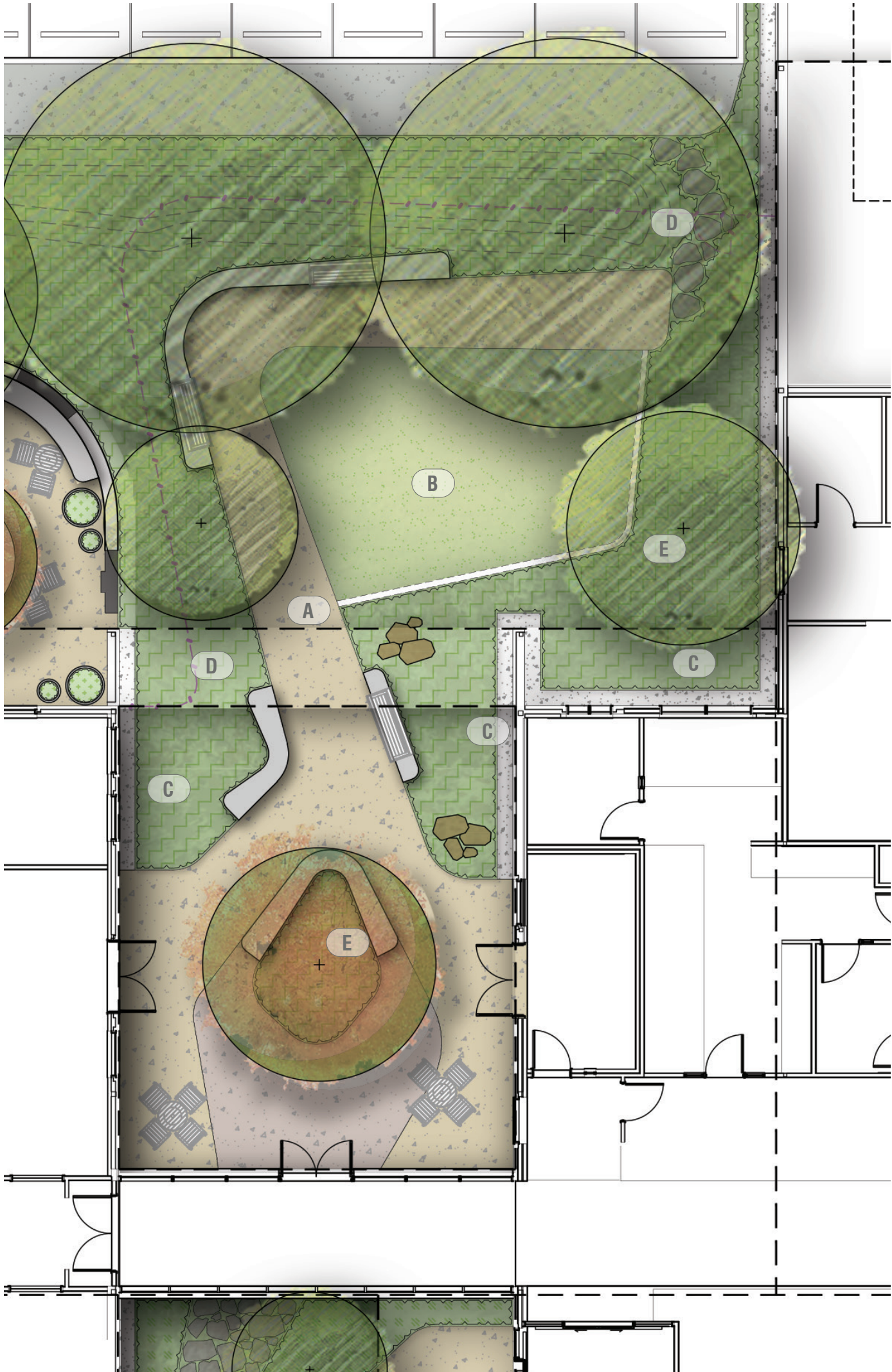


Courtyard within existing heritage facade

Northern Courtyard

The northern courtyard forms a space for visitors, staff and patients to enjoy. The lower portion includes garden beds with seating surrounding opening to a larger law area with seating and planting to the perimeter. The lawn provides a flexible space which could be used for gatherings. The space is secure with a fence around the northern edge concealed within planting.

- A Circulation pathway
- B Lawn and gathering space
- C Screening planting to adjacent rooms
- D Security fence to perimeter of courtyard
- E Feature Tree Planting



Seating to garden edges



Locally indigneous and cultural species

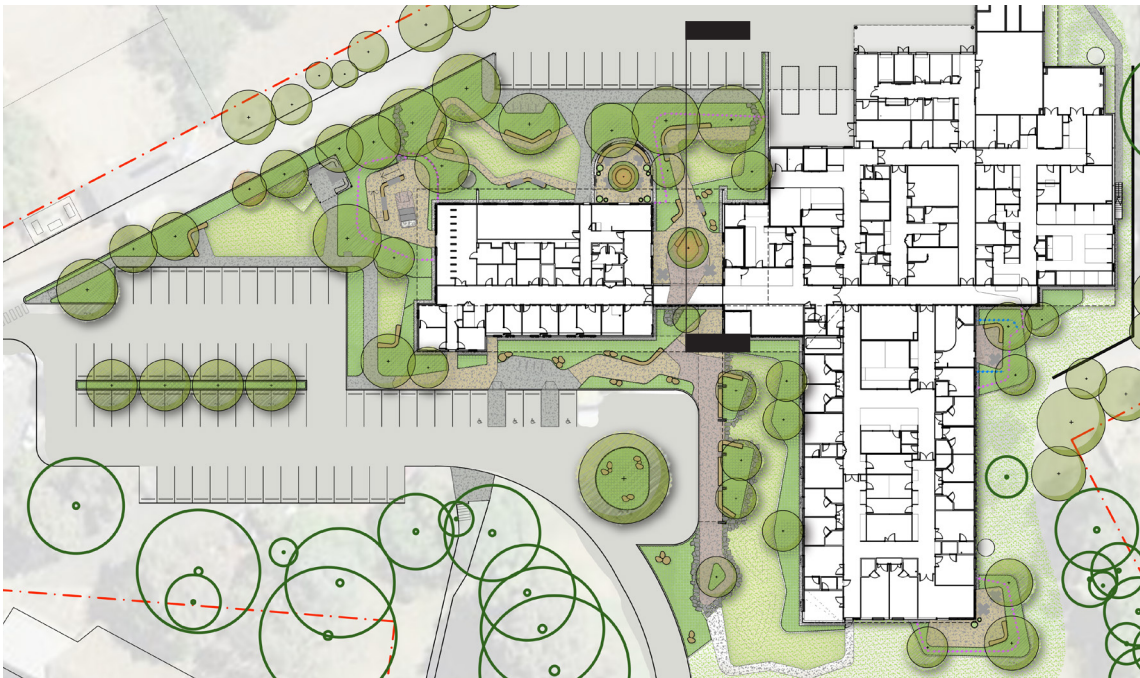


Lawn for gathering



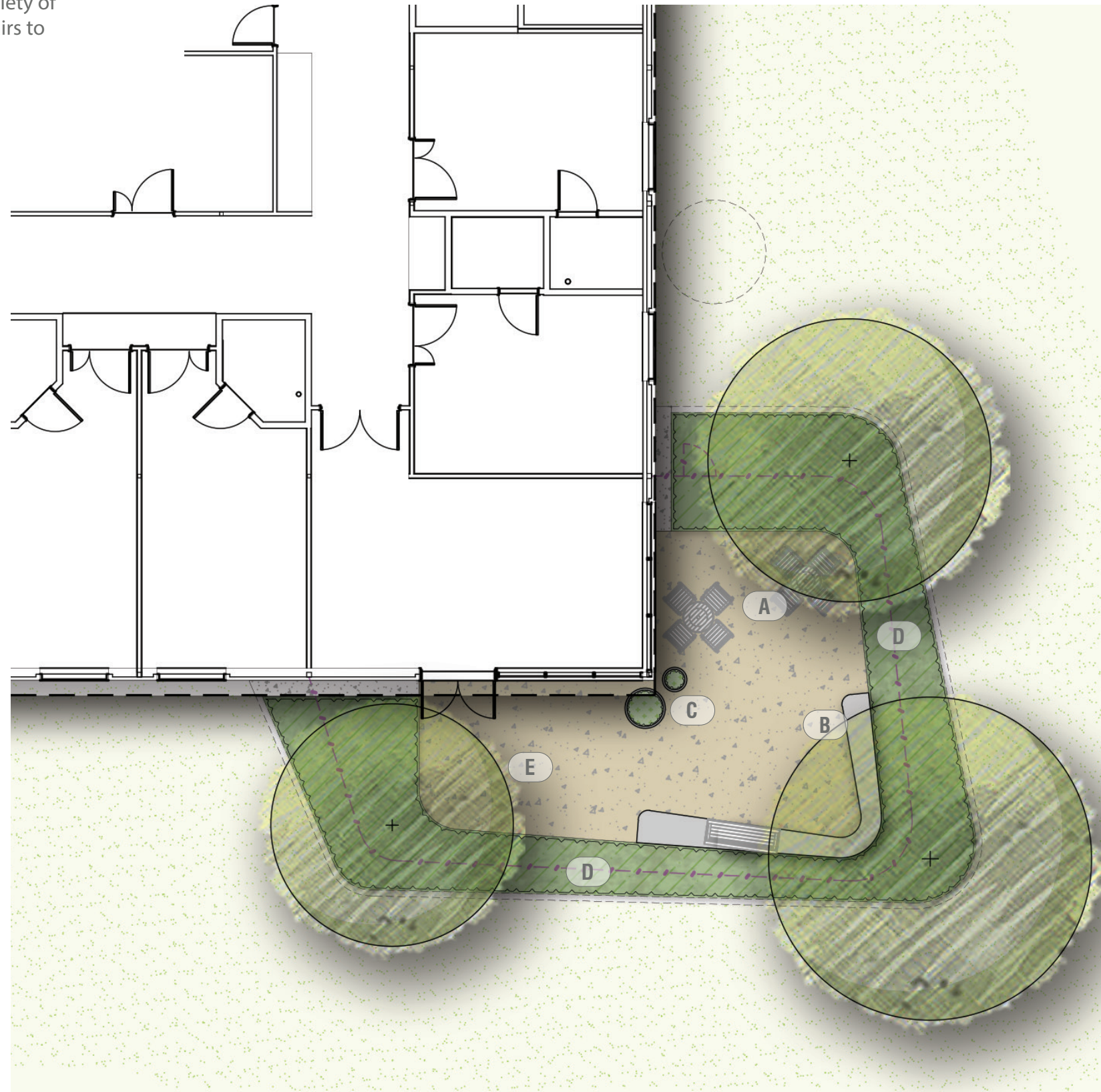
Sculptural natural materials

Northern Courtyard



IPU Courtyard

The IPU courtyard serves patients and their visitors allowing the opportunity to engage with the landscape. The courtyard overlooks the arboretum with a variety of seating and opportunities for beds and wheel chairs to be taken outdoors.



- A** Cafe/dining seating
- B** Bench seating
- C** Pots with sensory planting
- D** Perimeter screening planting
- E** Flexible area for wheelchairs and beds



Feature planting with seasonal interest



Medicinal species in pots



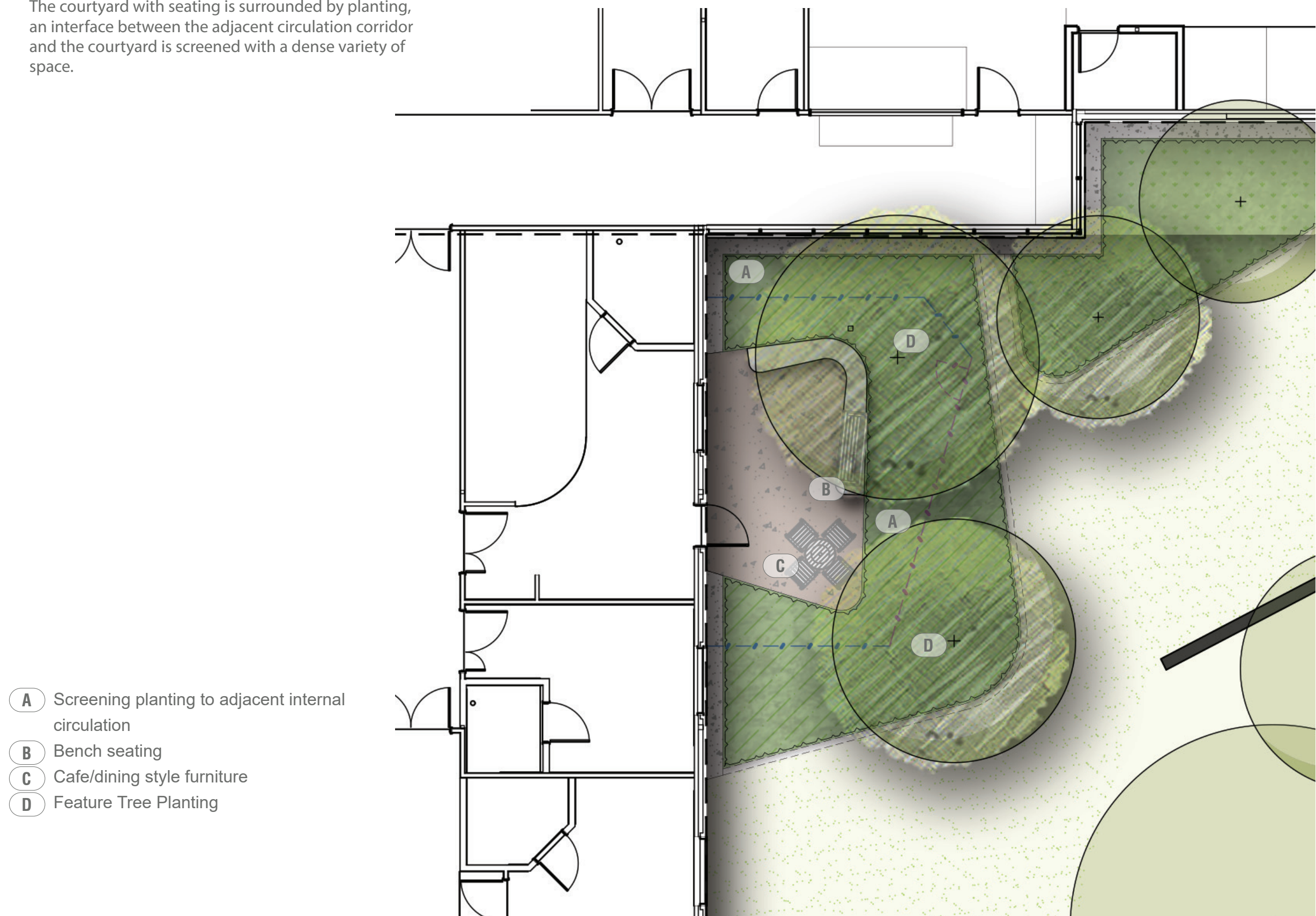
Sensory and seasonal planting



Bench seating

Birthing Courtyard

The birthing courtyard provides users of the maternity facility a secure outdoor space. The courtyard with seating is surrounded by planting, an interface between the adjacent circulation corridor and the courtyard is screened with a dense variety of space.



- A Screening planting to adjacent internal circulation
- B Bench seating
- C Cafe/dining style furniture
- D Feature Tree Planting



Feature tree



Seasonal panting



Bench seating



Culturally significant species

Connecting with Country

A co-design process has been initiated by Yerrabingin consultants.

The Yerrabingin Concept Development Report identifies design principles that drive the landscape design.

The design principles have informed the landscape concept, spatially, thematically, functionally as well as proposed materiality and planting.

This diagram provides a high level summary of landscape features integrated with the Yerrabingin Design Principles.



**Journeys
within Country**



**Familiarity and
Reflection**



**Working Gently
Together**



Central courtyard provides a garden for groups, gatherings, ceremony, retreat and reflection.



Feature planting at key entry points reinforces a welcoming arrival experience



Ongoing contributions to the existing arboretum provide opportunity for community involvement



Therapeutic courtyards for IPU, birthing and rehabilitation allow space for rest, reflection and healing within the landscape



Informal pathways allow for the exploration of the landscape and engagement with flora and fauna on the site

Planting Strategy

The planting strategy has been developed from Connecting with Country principles. With the key principles being informed through ecological outcomes as well as cultural and clinical outcomes. Additional indigenous tree species are proposed to compliment the existing arboretum on site. Species generally are to be low maintenance non toxic and low allergenic- particularly in areas close to the main building and clinical spaces.



Local Indigenous Plant Community Western Grey Box Tall Grassy Woodland



Grey Box

Eucalyptus microcarpa Birribee



Culturally Significant Species

Species used for medicine, food and weaving



Seasonal Interest & Wildlife Attracting

Species reflecting the seven Wiradjuri seasons with flowering- ing fruiting and edible plants



Community Significance

Roses
heritage planting

Indicative Plant Schedule

Botanic Name	Common Name	Mature Size (h x w)	Pot Size	Density
TREES				
Acacia pendula	Weeping Myall	4 x 4	200L	As Shown
Acacia deanei	Deane's Wattle	5 x 4	200L	As Shown
Acacia implexa	Hickory Wattle	3 x 3	200L	As Shown
Acer palmatum	Japanese Maple	5 x 3	200L	As Shown
Allocasuarina luehmannii	Bull Oak	12 x 6	200L	As Shown
Brachychiton populneus	Kurrajong	16 x 8	200L	As Shown
Callitris glaucophylla	White Cypress Pine	17 x 6	200L	As Shown
Casuarina cunninghamiana	River Sheoak	16 x 8	200L	As Shown
Eucalyptus microcarpa	Grey Box	4 x 3	200L	As Shown
Eucalyptus sideroxylon	Mugga Ironbark	20 x 8	200L	As Shown
Eucalyptus melliodora	Yellow Box	25 x 12	200L	As Shown
Lagerstroemia indica 'Natchez'	Crepe Myrtle	5 x 3	200L	As Shown
Pyrus 'Chantileer'	Chanticleer Pear	10 x 5	200L	As Shown
Santalum acuminatum	Quandong	4 x 3	200L	As Shown
Tristaniopsis laurina 'Luscious'	Watergum	10 x 4	200L	As Shown
Ulmus parvifolia	Chinese Elm	15 x 6	200L	As Shown
SHRUBS & ACCENTS				
Acacia 'Limelight'	Limelight acacia	0.8 x 1.0	300mm	Plan
Coleonema compactum	Diosma Dwarf Pink	0.8 x 0.6	300mm	Plan
Dodonaea viscosa	Broadleaf Hopbush	2 x 1	300mm	Plan
Hebe 'Blue Gem'	Hebe 'Blue Gem'	1 x 1.5	300mm	Plan
Indigofera australis	Australian indigo	2 x 3	300mm	Plan
Leptospermum grandifolium	Tea Tree	4 x 2	300mm	Plan
Leptospermum 'Pink Cascade'	Tea Tree	4 x 2	300mm	Plan
Persoonia curvifolia	Geebung	1 x 0.6	300mm	Plan
Atriplex nummularia	Oldman saltbush	3 x 2	300mm	Plan
Enchylaena tomentosa	Ruby saltbush	1 x 0.6	300mm	Plan
Rhagodia spinescens	Saltbush	0.6 x 1	300mm	Plan
Westringia 'Blue Gem'	Native Rosemary	0.6 x 0.8	300mm	Plan
GRASSES & GROUND COVERS				
Anigozanthus cultivars	Kangaroo Paw	0.8 x 0.4	150mm	5/m2
Brachyscome multifida	Cut Leaved Daisy	0.5 x 1.0	150mm	5/m2
Bulbine bulbosa	Bulbine Lily	0.5 x 0.5	150mm	5/m2
Carpobrotus glaucescens	Pigface	0.3 x 1	150mm	5/m2
Chrysocephalum apiculatum	Yellow Buttons	0.4 x 1	150mm	5/m2
Daucus glochidiatius	Australian Carrot	0.4 x 0.5	150mm	5/m2
Dianella longifolia	Blueberry Lily	0.5 x 0.5	150mm	5/m2
Dianella revoluta	Blue Flax-Lily	0.5 x 0.4	150mm	5/m2
Geranium solanderi	Australian Cranesbill	0.3 x 0.8	150mm	5/m2
Liriope 'Evergreen Giant'	Giant Mondo	0.6 x 0.6	150mm	5/m2
Lomandra filiformis	Wattle Mat-Rush	0.5 x 0.5	150mm	5/m2
Lomandra 'Tanika'	Dwarf Lomandra	0.5 x 0.6	150mm	5/m2
Sarcozona praecox	Sarcozona	0.6 x 0.6	150mm	5/m2
Trachelospermum jasminoides	Star Jasmine	0.5 x 1.0	150mm	5/m3
Hardenbergia violacea	Sarsaparilla	1 x 2	150mm	5/m2
Prostanthera denticulata	Rough Mint-Bush	0.5 x 0.3	150mm	5/m2
Viola hederacea	Native Violet	0.2 x 0.5	150mm	5/m2



Eucalyptus microcarpa



Eucalyptus sideroxylon



Brachychiton populneus



Rhagodia spinescens



Leptospermum grandifolium



Westringia 'Blue Gem'



Lomandra filiformis



Prostanthera denticulata



Chrysocephalum apiculatum

Materiality

The landscape palette will seek to reinforce Connecting with Country design principles by using a natural palette where possible.

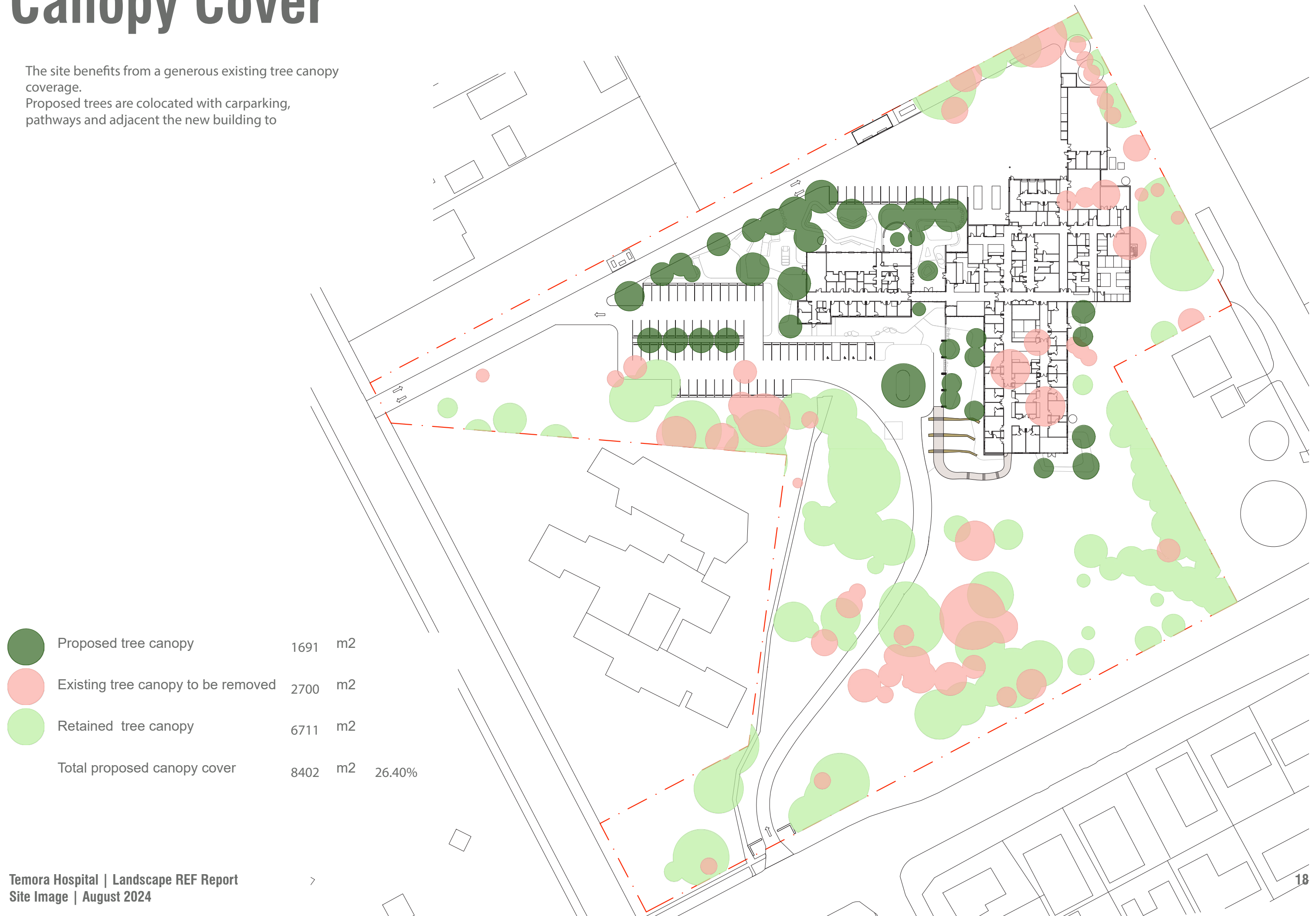
Opportunities to integrate local materiality and colours of Country will be explored. Including the architectural concept of local Temora Greenstone.

Proposed furniture will be durable in materials and form and equitable for a variety of users.



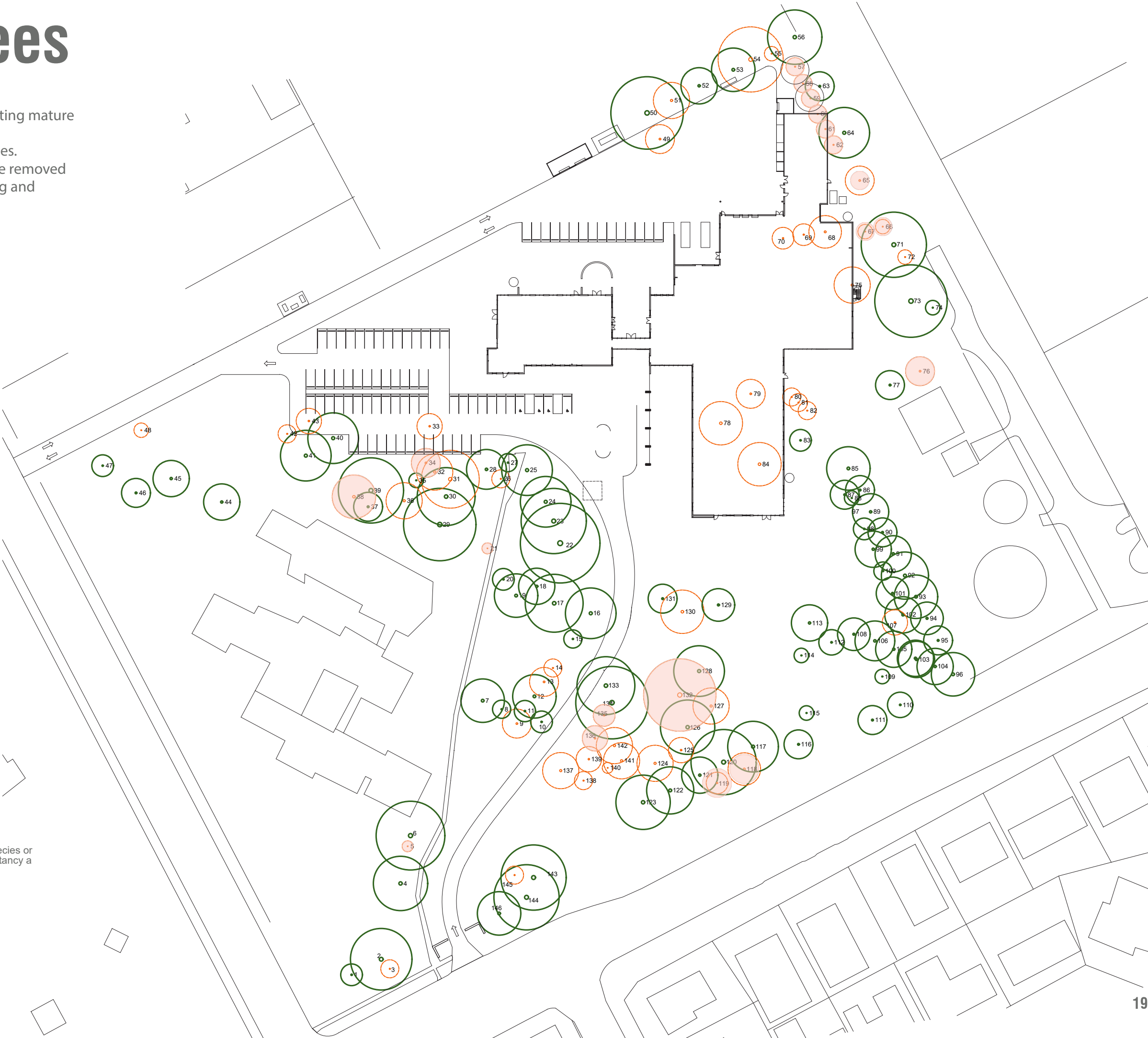
Canopy Cover

The site benefits from a generous existing tree canopy coverage.
Proposed trees are colocated with carparking, pathways and adjacent the new building to



Existing Trees

The hospital site includes a variety of existing mature native and exotic mature trees.
A preliminary arborist assessment 146 trees.
A small number of trees are required to be removed due to conflict with the proposed building and carparking extents.



- Existing tree to be retained
- Existing tree to be removed
- Tree to be removed priority
 - An insignificant tree (shrub) - very small or
 - the tree is in very poor condition or a weed species or
 - structurally very poor or short useful life expectancy a replacement tree/s is a far better option

Greener Places Response

Designing to the Greener Places and Better Placed Design Framework for Green Infrastructure:

Following the ethos of the ‘Greener Places’ design framework, this project focuses on providing a development harmonious with the existing setting.

Incorporating the Greener Places and Better Places principles through the landscape design philosophy

1. Integration & Better for community

Combine green infrastructure with urban development and grey infrastructure

Complementary tree canopy around the proposed building reinforces these connections. Retention and protection of existing canopy ensures a continuity of habitat for the variety of fauna around the site.

Exploration of WSUD initiatives have been employed, and even show cased by the inclusion of a central infiltration bed within the carpark as well as periphery of the hardstand will assist in the capture and treatment of water.

2. Connectivity

Create an interconnected network of open space

Key open spaces provided as part of the redevelopment are colocated with the proposed building. These spaces have a high visibility from the adjacent building and arrival sequence.

The existing arborteam and open space to the southern area of the site is retained - ensuring the hospital maintains its parkland setting.

3. Multi functionality & Better Fit

Deliver multiple ecosystem services simultaneously

The landscape performs a variety of ecosystem services including the treatment and management of water on site, and climate regulating through minimising hardstand and increasing tree canopy cover. Greater biodiversity in planting will allow for pollination and habitat creation. Culturally spaces have been provided to support the passing of knowledge and in particular the inclusion of locally significant materials and planting.

4. Participation & Better Value

Involve stakeholders in development and implementation

Participation as a principle seeks to involve the knowledge and needs of diverse parties in relation to planning. Ongoing engagement across indigenous groups and user groups has informed key design drivers and principles explained in this document. The look and feel of the landscape is to represent the community and include opportunities for ongoing participation and evolution through time.

Clinical courtyards are being developed with local user groups. The wealth of knowledge offered within this setting ensure the design and features are relevant for the community and supported by the day to day end users.

These principles are supported by three key strategies of

- Open space for recreation

A variety of open spaces are provided for users patients and staff.

These spaces allow for formal and informal gatherings of a variety of sizes, day and year round use of the space. Outdoor clinical spaces enable users the chance to connect with nature undertaking physical therapy outside and allow for respite.

- Urban tree canopy

The landscape design proposes canopy cover across the extent of the ground plane resulting in a net increase in canopy cover this is to be supported by an understory of locally native species complementing local ecologies of the area.

- Connecting bushland and waterways

The additional tree canopy will complement existing tree canopy in the area. The additional of new planting will ensure diversity in the age of trees on site ensuring succession in tree stock for ongoing tree canopy into the future.

The key benefits of adopting the Greener Places and Better Places framework as a basis for this design include:

- Locally harmonious landscape character
- Consideration of micro climates within the site
- sharing of the cultural and environmental stories of the area